

LUMISKIN™



FACIAL HAIR REMOVER

INSTRUCTION MANUAL & 1 YEAR WARRANTY

IMPORTANT: PLEASE KEEP THIS CARD TOGETHER WITH YOUR ORIGINAL PROOF OF PURCHASE IF CLAIMING

SAFETY INSTRUCTIONS:

To ensure proper operation of this device, please read this instruction manual carefully before use and keep it for further reference.

⚠ WARNING

- Do not use this device under the following conditions: persons with allergies; persons with open wounds, inflamed, chapped or swollen skin and other skin conditions on the area of use.
- Verify if the device is deformed or damaged before you start using it. Do not use the device if it has any damage.
- Immediately discontinue use if any abnormality or failure is detected during use.
- Discontinue use if skin irritation or other abnormality occurs after using the device, and consult a doctor.
- Do not attempt to modify, disassemble (except the removable parts), or repair the device by yourself.

⚠ CAUTION

- When using the device, do not press the blade too hard against the skin to prevent damaging the skin and to avoid reducing the blade lifetime.
- Keep device away from eyelashes, clothes, brushes & wires.
- Always turn the device on before use.
- Do not use the device with foreign attachment heads.
- Do not use the device with a broken blade as this may result in injury.
- Store in a cool & dry place.
- Device should never be fully immersed in water or other liquids as damage will occur.

- Do not use this device to cut anything other than hair.
- Do not use on people that are asleep.
- This device is not intended for use by persons (including children) with reduced physical, sensory or mental capabilities, or who lack experience and knowledge.
- Keep the device out of reach of children.
- Do not share the same device with others to prevent infection.
- Avoid dropping the device or cause any strong impact.
- Regularly clean the device to extend its lifetime.

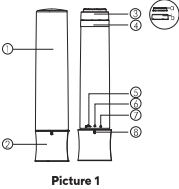
IMPORTANT: Always ensure the device is switched off when not in use or before cleaning. For best, even results, ensure hair is dry before using and do not apply any oils or lotions to skin or hair prior to use.

DEVICE SPECIFICATIONS:

- Name: Facial Hair Remover
- Model No: LU01018
- Power: 1.5V \approx 0.7W
- Type of Battery: AA 1.5V x 1 (not included)
- Executive Standard: Q/XM1008-2020

DEVICE DESCRIPTION:

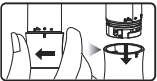
- Protective Cover
- Battery Cover
- Shaving Head
 - Rotary Head
 - Blade
- Light
- Rotation Indicator
- Lock Indicator
- On Indicator
- Alignment Indicator



INSTALLING THE BATTERY:

Ensure the device is switched off before you install the battery.

- Remove the Protective Cover (1).
- Rotate the Battery Cover (2) to the left to align the Alignment Indicator (8) "I" with the Rotation Indicator (5) "A", and pull to remove the Battery Cover (Picture 2).



Picture 2

- Insert 1 x AA battery into the battery compartment following the polarity of the battery (+ and -) (battery is not included).
- To put the Battery Cover back on, place the Battery Cover with the device bottom ensuring the Alignment Indicator "I" is aligned with the Rotation Indicator "A".
- Press the Battery Cover firmly and rotate it until the Alignment Indicator "I" is aligned with the Lock Indicator (6) "O" (Picture 3).



Picture 3

HOW TO USE:

To ensure the correct operation of this device, please read the instructions carefully before use.

- If you lock the device, it will not turn on.
- When using the device, it is recommended to use a mirror.
- Do not press the blade too hard against the skin to prevent damaging the skin and to avoid reducing the blade lifetime.

USING THE DEVICE:

- Remove the Protective Cover and rotate the Battery Cover to the right to align the Alignment Indicator "I" with the On Indicator "B".
- The device Light (4) will automatically turn on, assisting in providing extra illumination.
- Gently press the Rotary Head (3a) against your skin and move with steady circular motions to begin removing hair.
- In areas with extra skin, it is recommended to stretch the skin with your free hand (Picture 4).
- After using the device, rotate the Battery Cover to the left to align the Alignment Indicator "I" with the Lock Indicator "O" to turn the device off.
- The rotation mechanism of the Battery Cover prevents the device from accidentally turning on when not in use, acting as a lock system.



Picture 4

REMOVING & INSTALLING THE SHAVING HEAD:

Before handling or removing the Shaving Head (3), ensure the device is turned off.

- To remove the Shaving Head, rotate it anticlockwise and remove it.
- To install the Shaving Head, place it back on the device and twist clockwise to lock it into place (Picture 5).



Picture 5

CLEANING & MAINTENANCE:

- After use, it is important to clean away any loose hairs that have collected in the device. Regular cleaning will help prolong the product's lifetime.
- Ensure that the device is always switched off before cleaning.
- Thoroughly brush or gently blow away any hair and debris that has built up on the blade/s.
- After each use, rinse the removable attachment heads and blade/s with cool, clean water. Ensure that all removable attachment heads are detached from the device prior to rinsing. Dry thoroughly before storing.
- Do not submerge the device under water. Do not rinse with hot water.
- Clean the device surface with a dry cloth or with a cloth moistened with water.
- Never use lubricants, detergent or polishing agents on this device.

BLADE CARE:

Blades should be handled carefully and never bumped or used to cut dirty or abrasive material. Never use towels or wire ball sponges to clean the device blade.

STORAGE:

This device is powered by battery. Store in a cool & dry place. Do not store the device in a wet or humid environment for a long time. If you do not intend to use the device for an extended period, remove the battery and store the device properly.

BATTERY DISPOSAL:

Do not dispose of this product or battery in the normal household waste. The product and battery should be taken to a local collection facility where they will be dealt with safely and sent for the appropriate recycling. Never dispose of batteries in fire, failure to observe this precaution may result in an explosion. Never attempt to recharge primary batteries as this may cause leakage, fire or explosion.

TROUBLE SHOOTING:

Problem	Possible Cause	Solution
The device does not turn on.	The battery was inserted incorrectly.	Insert the battery correctly according to instructions.
	The battery is running low.	Replace the battery according to instructions.
	The device is locked.	Rotate the Battery Cover to align with the On Indicator.

LUMISKIN BATTERY OPERATED & RECHARGEABLE ELECTRICAL HAIR REMOVAL DEVICES

WARRANTY AGAINST DEFECTS

In this warranty:

Australian Consumer Law means the Australian consumer law set out in Schedule 2 of the Competition and Consumer Act 2010;

Goods means the product or equipment which was accompanied by this warranty and purchased in Australia

Manufacturer, We or Us means; for Goods purchased in Australia, LUMISKIN registered to Polished Brands Pty Ltd

Supplier means the retailer of the Goods that sold you the products in Australia;

You means you, the original consumer of the Goods.

- Our product guarantees are included under the Australian Consumer Law. You are entitled to a replacement or refund for a major failure. You are also entitled to have the goods replaced if the goods are not of acceptable quality and the failure does not amount to a major failure.
- This Warranty is in addition to rights in respect of the product found in the Australian Consumer Law. The purchaser of the product is provided with this Warranty subject to the Conditions here in:
- We warrant the Goods for all defects in workmanship or materials for the period of One (1) year from the date of purchase

(Warranty Period) If within the Warranty Period by reason of improper workmanship or material, the product is defective, we may, at our choice, replace the Goods without charge.

WARRANTY CONDITIONS

- The Goods must be used in accordance with the instructions and cautions listed in this card. It is important you retain this card for reference. This Warranty does not apply for defect in or failure of the Goods if attributable to misuse, abuse, accident or non-observance of manufacturer's instructions on the part of the user. We do not accept liability for any direct or consequential loss, damage or other expense caused by any failure to use the product in accordance with the manufacturer's instructions.
- Exhaustible components (such as cutting blades) of the Goods are included to this Warranty only where there is a defect in workmanship or materials used.
- The warranty granted is limited to replacement only.
- In the event of the Goods being replaced during the Warranty Period, the warranty on the replacement Goods will expire on the same date as for the Warranty Period on the original Goods which are replaced.
- In order to claim under the warranty granted under clause 3 you must:
 - Retain this warranty with your original receipt (proof of purchase); and
 - Contact the place of purchase for a refund or a replacement product.

- This warranty is immediately void if:
 - Any serial number or portion of the appliance plate is removed or defaced.
 - The Goods have been serviced or otherwise repaired by a person not authorised to do so by us or where non approved replaced parts are used.
 - The item has been mishandled in anyway.
- The Goods are designed for domestic use only.
- This warranty does not cover the cost of claiming under the warranty or transport of the goods to and from the Supplier.
- This warranty is only valid and enforceable in Australia. Please allow up to 8 weeks to receive your replacement product.

LUMISKIN™

LUMISKIN™ is a trademark of Polished Brands.
Suite 8/11 Beach Street
Port Melbourne, VIC AUS 3207

lumiskin.com.au

Made in China



Specifications are subject to change without notice